

**maeg**

# SUSPENSION BRIDGE A26

BRIDGES AND VIADUCTS

- **CABLE-STAYED BRIDGE**



# SUSPENSION BRIDGE A26

## Location

Linz, Austria

## Client

ASFINAG

## Contractor

ARGE A26 DONAU BRÜCKE ICM MAEG F-PILE

## Period of execution

2019-2023

## Weight

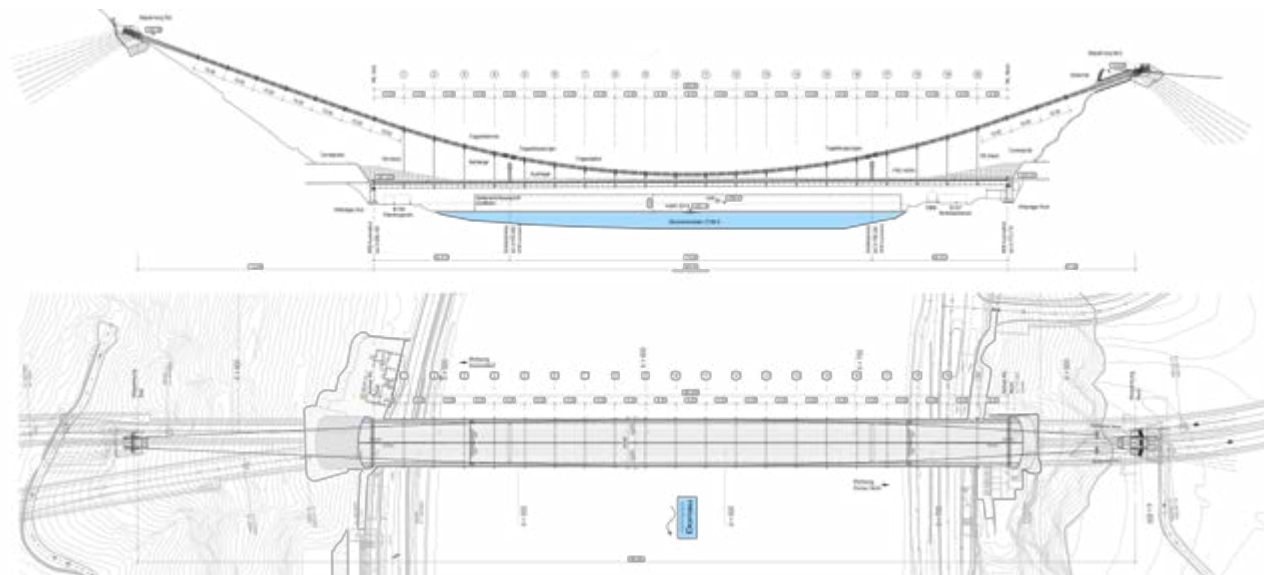
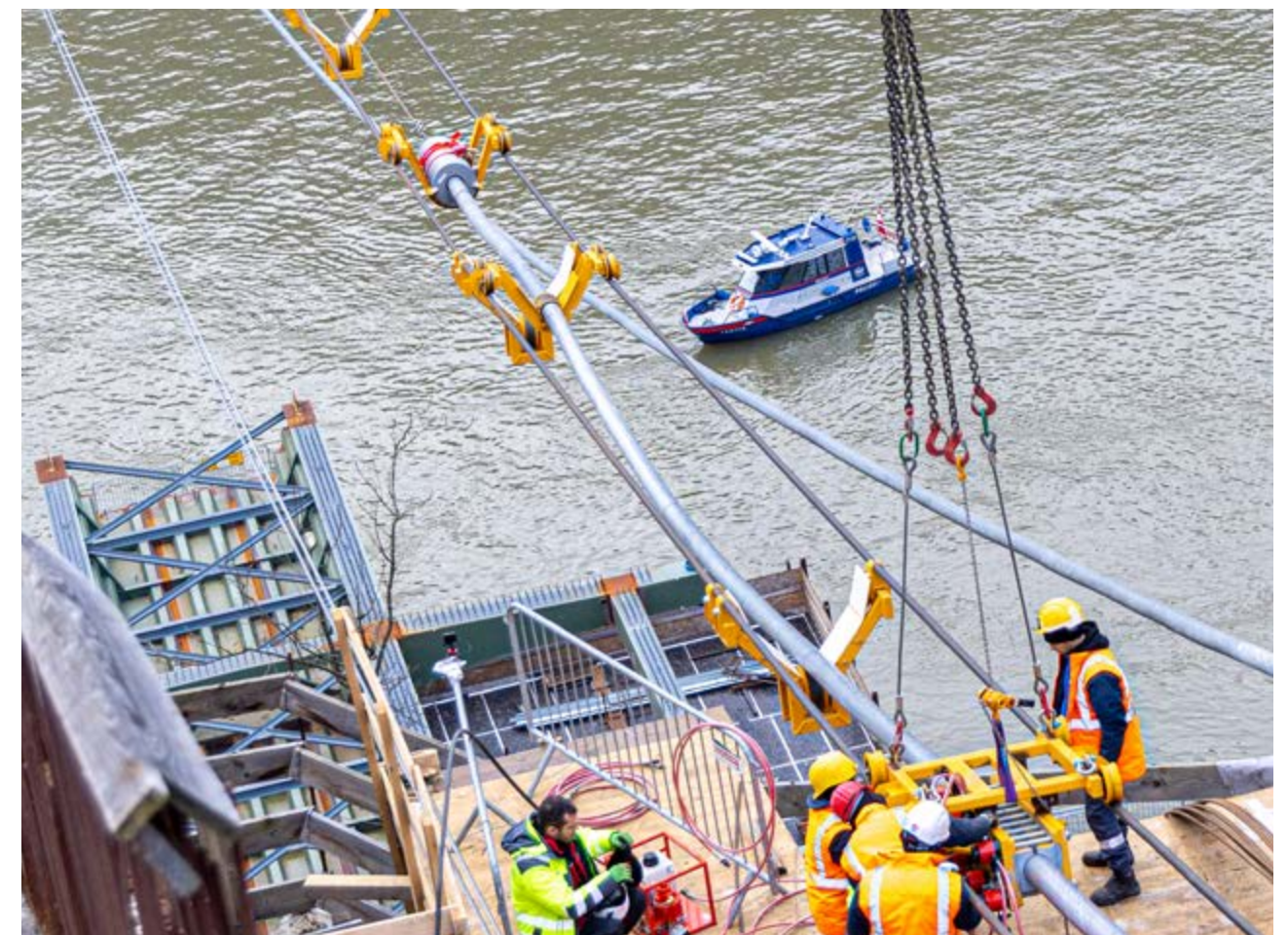
2.200 tons

## Length

305 meters

A26 Linzer Autobahn is a project that aims to solve traffic congestion in the third Austrian city. The first segment consists in the construction of a suspended bridge over the Danube River, 305 meters long, that connects two tunnels of 3.0 km.

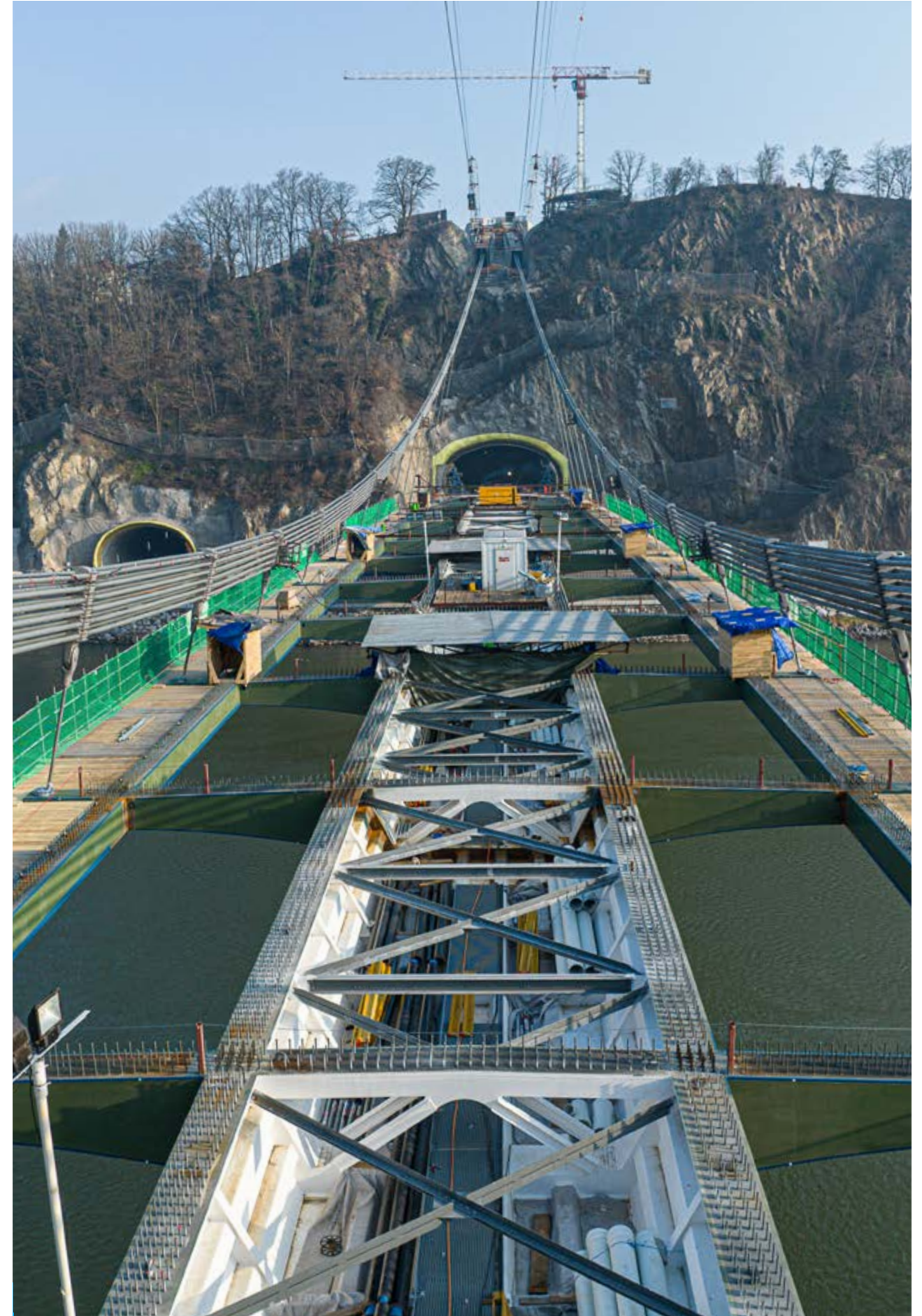
The bridge consists of a 24,5-meter-wide deck constituted by a trapezoidal steel box girder 7.8 meters wide in the upper part and 5 in the lower part, spaced by steel cross beams of 14.55 meters supporting concrete slabs. For reasons of space on site, the deck is pre-assembled in macro elements in a dedicated area along the Danube river. Then is moved into position with a barge, lifted with jacks and hooked to hanger cables. The structure is supported by two rows of twelve steel cables each, hooked to concrete anchors immersed in the slope of the mountain, anchored to the rock by over a hundred rods each.

















Ideas  
**shape**  
the  
World

Maeg Costruzioni S.p.A.  
Via Toniolo 40  
31028, Vazzola (TV) - Italy  
+39 0438 441558  
[www.maegspa.com](http://www.maegspa.com)